



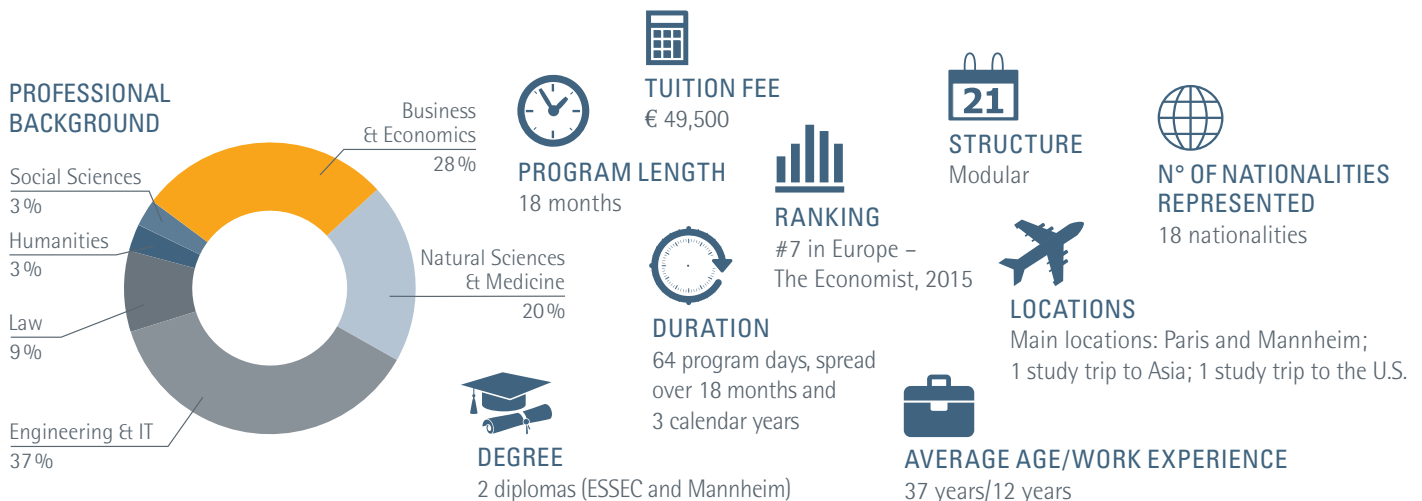
ESSEC & MANNHEIM Executive MBA

ESSEC & MANNHEIM
EXECUTIVE MBA

EXPECT THE BEST

THE PROGRAM AT A GLANCE

The ESSEC & MANNHEIM Executive MBA offers you a fast-track solution to career advancement through an international program designed to expose you to both core management basics and evolving cutting-edge business topics. The integrated leadership track prepares you to take on top business roles.



OBJECTIVES

- Acquire relevant knowledge and tools readily applicable to the challenges of your job
- Develop a 360 degree view of business and expertise in all corporate functions
- Share best practices with peers and gain first-hand insights into different industries and functions through a group work philosophy
- Gain an international perspective on doing business through exposure to a variety of cultures and growing business markets
- Enhance your leadership skills in preparation for taking on top level jobs
- Create and hone a valuable and lasting network of business partners and friends
- Increase your versatility and value to your employer, thus multiplying your career opportunities

KEY BENEFITS

- **An executive-friendly format** designed to minimize your out-of-office time
- **Flexibility to design your own learning experience** through Advanced Immersion Modules (AIMS), in-depth electives on cutting-edge topics, taking place in Paris, Mannheim, Singapore
- **A cross-cultural business perspective** gained through study trips to Europe, the United States and Asia and through culturally diverse classes with more than 15 different nationalities represented
- **Opportunities to mix with participants of our Asia Pacific track** through shared courses and study trips, providing for diverse business perspectives and increased networking opportunities
- **A Leadership Development Track** to enhance your soft skills and your ability to lead through team building exercises, group coaching and leadership workshops
- **An integrated Career Advancement Track**, made up of workshops, networking and individual coaching, tailored to help you achieve your individual career goals
- **A Strategic Project**, carried out in groups, allowing you to directly apply skills developed during the program to a real business strategy problem
- **Exposure to world-class faculty** who combine real business know-how with cutting-edge insights from research
- **Integration of two alumni networks of excellence**, which include more than 70,000 former students from both ESSEC and Mannheim Business Schools

TWO PARTNERS, ONE GOAL: GUIDING YOU TO THE TOP

With the inception of the ESSEC & MANNHEIM Executive MBA in 2004, two of Europe's leading business schools – ESSEC Business School and Mannheim Business School – joined forces to create a program that is European in tradition but international in outlook. Since then, the partner schools have widened the program's international scope by integrating an Asia-Pacific track in 2014, delivered from ESSEC's Singapore campus. Today, the program boasts of more than 1,500 alumni around the globe, successfully leading top international companies.



MANNHEIM BUSINESS SCHOOL

- First German business school to have achieved triple-crown accreditation: AACSB, EQUIS and AMBA
- Consistently ranked best German business school in national and international rankings (e.g. #5 worldwide in the Financial Times ranking for Customized Programs)
- The Mannheim region is globally renowned for its innovation and quality in research, science and production
- 50% of Germany's top 500 companies are based within 250 kilometers of Mannheim

ESSEC BUSINESS SCHOOL

- First business school accredited by AACSB outside of North America; EQUIS accredited
- Has been offering Executive MBA programs for over 20 years
- Ranked among the top 15 business schools worldwide in Executive Education (Financial Times)
- 3 campuses: Paris, Cergy, Singapore
- Guided by the values of humanism, innovation, responsibility, excellence and diversity
- 21 Research Chairs working closely with corporations

TOGETHER WE OFFER:

- Over 100 years of experience in business education
- An international faculty with more than 200 members, recognized globally for academic excellence
- Corporate contacts to more than 3,500 companies
- A network of approximately 200 prestigious partner business schools and universities worldwide
- A combined alumni network of more than 70,000 graduates





“The ESSEC & MANNHEIM EMBA was truly one of the best investments I have made. Excellent leadership skills and optimal use of human and capital resources are crucial to succeeding in a global environment today and the EMBA program provided me with an ideal opportunity to develop these skills and to continue to evolve as an executive. I especially have benefited from the exchange with peers from a wide range of industries and cultures, which has opened up new experiences and perspectives for me.”

MARC SETZEN

ESSEC & MANNHEIM EMBA Class of 2010

Chief Technology Officer, Klöckner Pentaplast Group

“As an American living in France, opting for the ESSEC & MANNHEIM EMBA meant choosing one of Europe’s most international programs. In addition to receiving an internal promotion after completing the program, this experience ended up transforming me and changed my approach to management. I now act more like a coach who supports my teams in their growth.”

MONA ABRAHAM

ESSEC & MANNHEIM EMBA Class of 2014

Senior Director, Yazaki Corporation

Electronics & Instrumentation Business Unit



“The ESSEC & MANNHEIM EMBA is more than an academic program. It’s an incredible life experience that combines networking and the sharing of best practices, international residencies abroad, leadership development and group projects. The EMBA has also served as a springboard for my career: since graduation, I’ve transitioned from a position in a Big Four Audit Firm to a senior Manager role in a dynamic Strategy Consulting firm.”

MARTHE PRADÈRE

ESSEC & MANNHEIM EMBA Class of 2015

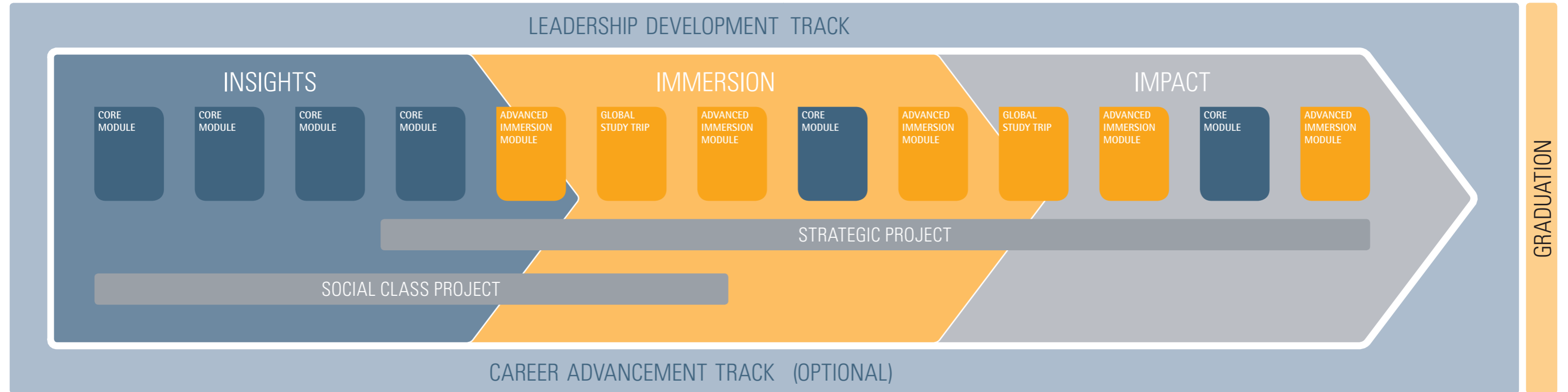
Senior Manager, Strategy & Organisation, Tallis Consulting (Square Group)



FROM INSIGHT TO IMPACT

Month 1

Month 18



INSIGHTS

CORE MODULES

Gain insight into core business fundamentals. Enhance and sharpen your business knowledge and acquire a comprehensive perspective on all corporate functions. Each core module comprises two or three core courses.

Examples of core courses:

- Business Ethics
- Corporate Finance
- Economic Analysis
- Financial Accounting
- Marketing Management
- Strategy
- Supply Chain Management

IMMERSION

GLOBAL STUDY TRIPS

The ESSEC & MANNHEIM Executive MBA is one of the most international programs of its kind. In addition to the multicultural make-up of the class and exposure to the cities and cultures of Paris, Mannheim and Singapore, the program offers study trips to Asia and the United States, designed to immerse you in the local life of a specific culture, in cooperation with renowned partner business schools.

Interact with senior-level professionals and professors during courses and conferences, familiarize yourself with new business styles and practices and leave having developed invaluable insights into new cultures.

ADVANCED IMMERSION MODULES

ESSEC & MANNHEIM Business Schools strive to create a learning experience that is collaborative, yet adapted to your personal goals. To this end, we ask you to custom build a portion of your program by selecting from a number of Advanced Immersion Modules (AIMS) – electives designed around cutting-edge business topics taking place on one of our campuses in Paris, Mannheim or Singapore.

During these modules – made up of courses, corporate speakers and workshops – you are immersed in your chosen topic for five days so as to acquire an in-depth understanding of the subject at hand. Examples of themes covered include: Digital Business, Entrepreneurial Thinking and Markets & Innovation.

IMPACT

STRATEGIC PROJECT

Directly apply the knowledge you have acquired during the program to a Strategic Project, a value-creating group response to a real business issue faced by a company today, approved by the owner or board. This project could also entail the creation of a new product or business.

Seminars on financing, communication and business planning will inform all stages of the 15-month project, with the ultimate goal being implementation of the project by the company or founding a new company based on the elaborated business plan.

SOCIAL CLASS PROJECT

Integrity, social commitment and professional responsibility are key principles underlying our mission to educate responsible executives who will make a difference in the business world.

The Social Class Project – a project which contributes to the betterment of society – is chosen and run collectively by the class, and fosters teamwork and strengthens class spirit. Examples of past projects have included fundraising efforts for children suffering from cancer and a program ensuring that veterans have access to job opportunities.

LEADERSHIP AND CAREER DEVELOPMENT

CAREER ADVANCEMENT TRACK

Planning for the next stage of your career requires knowing yourself, your competitive strengths and how to capitalize on professional opportunities. The Career Advancement Track is made up of individual coaching sessions, workshops and corporate and networking events which provide you with the confidence and practical skills necessary to move your career forward. Discuss your career plans during individual sessions with trained coaches, learn how to become visible online through practical workshops and make durable, key contacts during corporate networking events.

LEADERSHIP DEVELOPMENT TRACK

Leadership challenges in modern business vary from the level of "captaincy" of a small team to the stewardship of a multi-national corporation. Developing your leadership skills remains one of the keys to succeeding in a high-level position. This program offers a framework and time for self-reflection, and allows you to progressively develop these skills through team building exercises, group coaching, experiential training sessions at St Cyr Military Academy, and by maintaining a "leadership journal". By the end of this track, you will have gained a greater understanding of yourself, your values and skill sets with the end goal of becoming a more effective leader.

SAMPLE SCHEDULE

CALENDAR YEAR 1

SEPTEMBER							
W	Mo	Tu	We	Th	Fr	Sa	Su
35					1	2	3
36	4	5	6	7	8	9	10
37	11	12	13	14	15	16	17
38	18	19	20	21	22	23	24
39	25	26	27	28	29	30	

OCTOBER							
W	Mo	Tu	We	Th	Fr	Sa	Su
39							1
40	2	3	4	5	6	7	8
41	9	10	11	12	13	14	15
42	16	17	18	19	20	21	22
43	23	24	25	26	27	28	29
44	30	31					

Core Module 1: Paris

NOVEMBER							
W	Mo	Tu	We	Th	Fr	Sa	Su
44			1	2	3	4	5
45	6	7	8	9	10	11	12
46	13	14	15	16	17	18	19
47	20	21	22	23	24	25	26
48	27	28	29	30			

Core Module 2: Mannheim

DECEMBER							
W	Mo	Tu	We	Th	Fr	Sa	Su
48					1	2	3
49	4	5	6	7	8	9	10
50	11	12	13	14	15	16	17
51	18	19	20	21	22	23	24
52	25	26	27	28	29	30	31

CALENDAR YEAR 2

JANUARY							
W	Mo	Tu	We	Th	Fr	Sa	Su
1	1	2	3	4	5	6	7
2	8	9	10	11	12	13	14
3	15	16	17	18	19	20	21
4	22	23	24	25	26	27	28
5	29	30	31				

Core Module 3: Paris

FEBRUARY							
W	Mo	Tu	We	Th	Fr	Sa	Su
5				1	2	3	4
6	5	6	7	8	9	10	11
7	12	13	14	15	16	17	18
8	19	20	21	22	23	24	25
9	26	27	28				

MARCH							
W	Mo	Tu	We	Th	Fr	Sa	Su
9				1	2	3	4
10	5	6	7	8	9	10	11
11	12	13	14	15	16	17	18
12	19	20	21	22	23	24	25
13	26	27	28	29	30	31	

Core Module 4: Mannheim

APRIL							
W	Mo	Tu	We	Th	Fr	Sa	Su
13							1
14	2	3	4	5	6	7	8
15	9	10	11	12	13	14	15
16	16	17	18	19	20	21	22
17	23	24	25	26	27	28	29
18	30						

MAY							
W	Mo	Tu	We	Th	Fr	Sa	Su
18		1	2	3	4	5	6
19	7	8	9	10	11	12	13
20	14	15	16	17	18	19	20
21	21	22	23	24	25	26	27
22	28	29	30	31			

Advanced Immersion Module

JUNE							
W	Mo	Tu	We	Th	Fr	Sa	Su
22					1	2	3
23	4	5	6	7	8	9	10
24	11	12	13	14	15	16	17
25	18	19	20	21	22	23	24
26	25	26	27	28	29	30	

JULY							
W	Mo	Tu	We	Th	Fr	Sa	Su
26							1
27	2	3	4	5	6	7	8
28	9	10	11	12	13	14	15
29	16	17	18	19	20	21	22
30	23	24	25	26	27	28	29
31	30	31					

Study trip: USA

AUGUST							
W	Mo	Tu	We	Th	Fr	Sa	Su
31			1	2	3	4	5
32	6	7	8	9	10	11	12
33	13	14	15	16	17	18	19
34	20	21	22	23	24	25	26
35	27	28	29	30	31		

SEPTEMBER							
W	Mo	Tu	We	Th	Fr	Sa	Su
35						1	2
36	3	4	5	6	7	8	9
37	10	11	12	13	14	15	16
38	17	18	19	20	21	22	23
39	24	25	26	27	28	29	30

Core Module 5: Paris

OCTOBER							
W	Mo	Tu	We	Th	Fr	Sa	Su
40	1	2	3	4	5	6	7
41	8	9	10	11	12	13	14
42	15	16	17	18	19	20	21
43	22	23	24	25	26	27	28
44	29	30	31				

Advanced Immersion Module
Study trip: Asia

NOVEMBER							
W	Mo	Tu	We	Th	Fr	Sa	Su
44			1	2	3	4	
45	5	6	7	8	9	10	11
46	12	13	14	15	16	17	18
47	19	20	21	22	23	24	25
48	26	27	28	29	30		

DECEMBER							
W	Mo	Tu	We	Th	Fr	Sa	Su
48						1	2
49	3	4	5	6	7	8	9
50	10	11	12	13	14	15	16
51	17	18	19	20	21	22	23
52	24	25	26	27	28	29	30
1	31						

Advanced Immersion Module

CALENDAR YEAR 3

JANUARY							
W	Mo	Tu	We	Th	Fr	Sa	Su
1		1	2	3	4	5	6
2	7	8	9	10	11	12	13
3	14	15	16	17	18	19	20
4	21	22	23	24	25	26	27
5	28	29	30	31			

Core Module 6: Mannheim

FEBRUARY							
W	Mo	Tu	We	Th	Fr	Sa	Su
5					1	2	3
6	4	5	6	7	8	9	10
7	11	12	13	14	15	16	17
8	18	19	20	21	22	23	24
9	25	26	27	28			

Advanced Immersion Module

MARCH							
W	Mo	Tu	We	Th	Fr	Sa	Su
9					1	2	3
10	4	5	6	7	8	9	10
11	11	12	13	14	15	16	17
12	18	19	20	21	22	23	24
13	25	26	27	28	29	30	31

Advanced Immersion Module

APRIL							
W	Mo	Tu	We	Th	Fr	Sa	Su
14	1	2	3	4	5	6	7
15	8	9	10	11	12	13	14
16	15	16	17	18	19	20	21
17	22	23	24	25	26	27	28
18	29	30					

Final SP Jury

CORE MODULES **STUDY TRIPS** **IMMERSION (choose 5 out of 7 modules)**

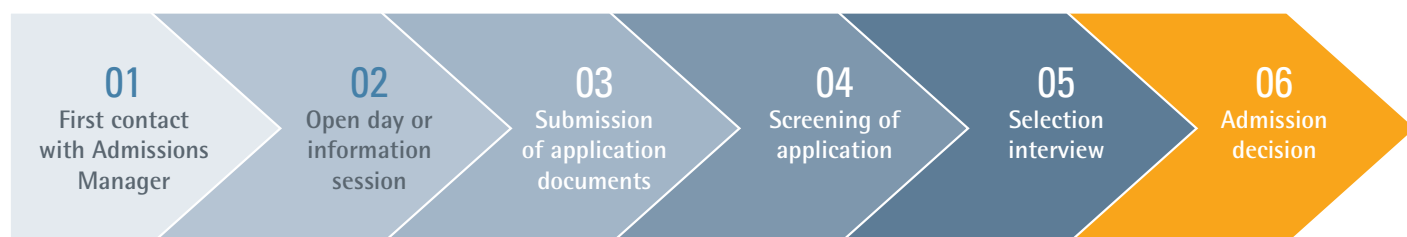
Only 47 working days and 66 presence days in total over three calendar years. Dates are subject to change.

WHO SHOULD APPLY?

THE ESSEC & MANNHEIM EXECUTIVE MBA IS THE RIGHT CHOICE FOR YOU IF YOU HAVE:

- A first academic degree
- At least eight years professional experience, including managerial experience
- The support of your employer and his or her permission to attend classes on workdays
- Very good command of the English language (program entirely taught in English)
- Experience in an international work environment
- The motivation to invest a substantial amount of time and effort into our highly challenging and rewarding Executive MBA program

ADMISSION PROCESS



To find out more about the ESSEC & MANNHEIM experience, we encourage you to:

- Visit www.essec-mannheim.com
- Join one of our information events
- Meet us at MBA fairs
- Contact us by phone or e-mail
- Set up an appointment for a personal orientation counseling
- Get in contact with current participants or alumni



The program starts in October. Visit our website for information on our early bird offers and tuition fees.

www.essec-mannheim.com



ESSEC Business School
Executive MBA Program
2, Place de la Défense
CNIT – BP 230
92053 Paris La Défense, France
Phone +33 (0)1 46 92 49 00
Fax +33 (0)1 46 92 49 91
essec.mba@essec-mannheim.com



MANNHEIM
BUSINESS SCHOOL

Mannheim Business School gGmbH
Executive MBA Program
L 5, 6
68131 Mannheim, Germany

Phone +49 (0)621 181 37 21
Fax +49 (0)621 181 12 78
ma.mba@essec-mannheim.com